

3-sided corners type RKM-T

- Multifunctional 3-sided rail connector

Brand

- SUFIX

Application

- For perpendicular fixing of mounting rails type **MR-GT** to wall, ceiling or floor
- For mounting horizontal crosspieces in profile frames

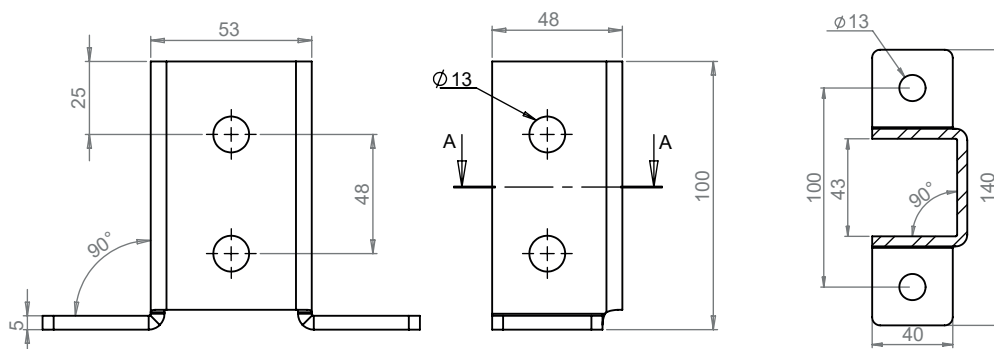
Material

- Galvanized steel

Accessories

To be mounted with :

- M10 bolts with nut, type BNU
- M10 sliding nuts with bolt, type SLNB-GT



Mounting example

