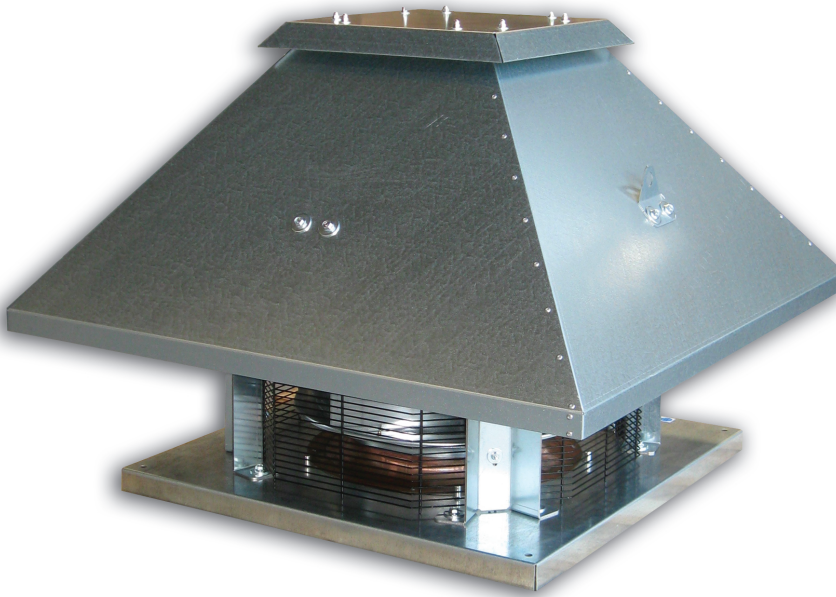


ROOF-CM ATEX

- Roof fans
- Horizontal discharge
- Motor outside of air stream
- IP55



Roof exhaust units type ROOF-CM ATEX

ATEX roof exhaust unit with horizontal discharge

Application

- **ROOF-CM ATEX** line has been designed for installations where it is necessary to guarantee the correct air extraction avoiding risks of explosion due to flammable gas. For instance, battery rooms, chemical premises, laboratories etc.. For direct or ducted installation on the roof

Composition

- High efficiency backward curved blade impeller in galvanized steel sheet
- Balancing according to UNI – ISO 1940
- Fixing base, with inlet cone, in steel sheet protected against the atmospheric agents
- Protection guard in steel rod protected against the atmospheric agents
- Cap in techno-polymer
- Asynchronous three-phase or mono-phase electric motor, outside the airflow, protection IP 55, insulation class F, S1 service, construction according to IEC / EEC / UNEL MEC. Flame proof EEx-d. ATEX approved for explosive atmosphere G GROUP II
- Arrangement 5; directly coupled to the motor shaft

Accessories

- Inlet gravity shutter **GS-RH**
- Inlet protection grid **RA** (necessary for use in free air)
- Inlet silencer **SIL-RO**

Options

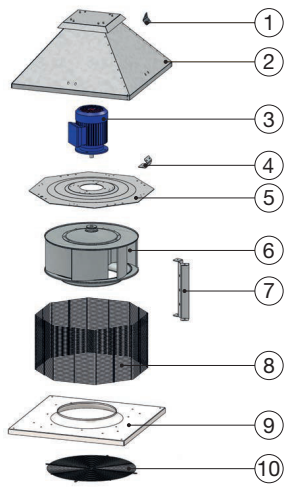
- Explosion proof versions (**ROOF-CM ATEX**)

Text for tender

- The air shall be extracted by means of a ATEX roof fan with horizontal discharge with base in galvanized sheet steel and polyester paint finish
- **ATC** type **ROOF-CM ATEX**

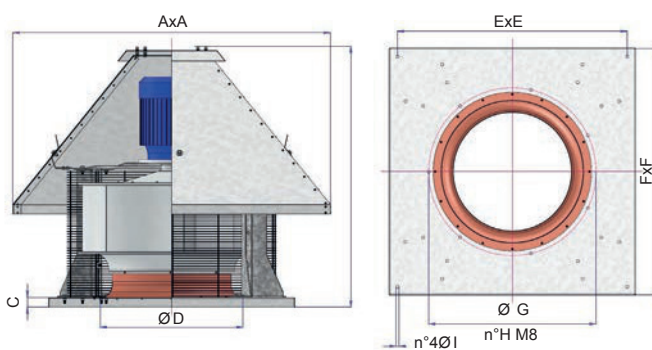
Order example

- **ROOF-CM 454 T ATEX**
ROOF-CM 454 T ATEX = fan



Components

- 1. Lifting brackets
- 2. Cover
- 3. Motor
- 4. Cover brackets
- 5. Motor support
- 6. Impeller
- 7. Protection grid
- 8. Grid brackets
- 9. Fixing base
- 10. Protection grid (accessory / mandatory for free air)



	Dimensions									
	A [mm]	B [mm]	C [mm]	ØD [mm]	E [mm]	F [mm]	ØG [mm]	n°H [mm]	ØI [mm]	[kg]
31	560	510	30	280	360	400	310	3	11	20
35	660	610	30	300	450	500	330	3	11	26
40	830	670	35	350	600	650	382	4	11	30
45	830	690	35	400	600	650	432	4	11	45
50	1000	800	40	450	710	760	485	5	11	60
56	1000	830	40	500	710	760	535	5	11	65
63	1200	930	40	550	870	930	580	6	11	78
71	1200	990	40	600	870	930	634	7	11	110
80	1200	1020	40	710	870	930	770	12	12	170

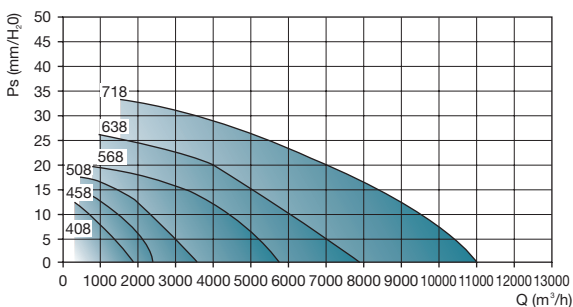
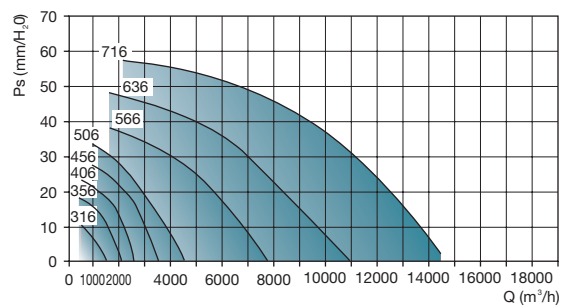
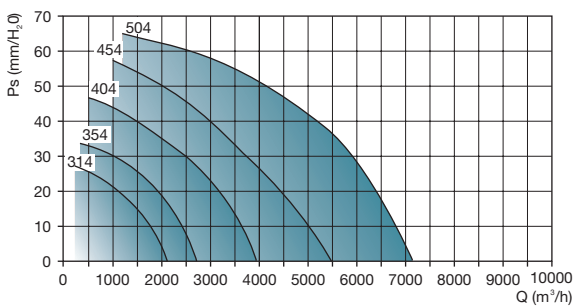
Technical data					
4p - 1500 RPM - 1Ph 230V 50Hz					
	Q _v [m ³ /h]	P _m [kW]	I [A]	M	L _w [dB(A)]
ROOF-CM 314 M ATEX	1800	0.18	1.6	63	56
ROOF-CM 354 M ATEX	2850	0.25	2.4	71	59
ROOF-CM 404 M ATEX	4500	0.37	3.1	71	63
ROOF-CM 454 M ATEX	5750	0.75	5.6	80	67
4p - 1500 RPM - 3Ph 400V 50Hz					
	Q _v [m ³ /h]	P _m [kW]	I [A]	M	L _w [dB(A)]
ROOF-CM 314 T ATEX	1800	0.18	0.6	63	56
ROOF-CM 354 T ATEX	2850	0.25	0.8	71	59
ROOF-CM 404 T ATEX	4500	0.37	1.2	71	63
ROOF-CM 454 T ATEX	5750	0.75	2.0	80	67
ROOF-CM 504 T ATEX	8500	1.10	2.8	90	71
6p - 1000 RPM - 3Ph 400V 50Hz					
	Q _v [m ³ /h]	P _m [kW]	I [A]	M	L _w [dB(A)]
ROOF-CM 316 T ATEX	1450	0.09	0.45	63	47
ROOF-CM 356 T ATEX	2050	0.18	0.7	71	50
ROOF-CM 406 T ATEX	2550	0.18	0.7	71	54
ROOF-CM 456 T ATEX	3800	0.37	1.3	80	58
ROOF-CM 506 T ATEX	6000	0.37	1.3	80	63
ROOF-CM 566 T ATEX	9000	0.75	2.0	90	65
ROOF-CM 636 T ATEX	11800	1.10	3.0	90	66
ROOF-CM 716 T ATEX	16200	2.20	5.0	112	71
ROOF-CM 806 T ATEX	20000	3.00	6.8	132	72
8p - 750 RPM - 3Ph 400V 50Hz					
	Q _v [m ³ /h]	P _m [kW]	I [A]	M	L _w [dB(A)]
ROOF-CM 408 T ATEX	1950	0.08	0.5	71	48
ROOF-CM 458 T ATEX	2350	0.18	0.8	80	54
ROOF-CM 508 T ATEX	4000	0.25	1.1	80	55
ROOF-CM 568 T ATEX	6500	0.37	1.4	90	56
ROOF-CM 638 T ATEX	8800	0.55	2.0	90	59
ROOF-CM 718 T ATEX	12000	0.75	2.3	100	63
ROOF-CM 808 T ATEX	15000	2.2	5.5	132	66

- Q_v - flow rate
- P_m - power
- I - current
- M - motor type
- L_w - sound level

Explanation

- p - poles
- T - total

Selection curves



Notes

- Ps = pressure in B mmH₂O
- Q = flow rate