



Centrifugal fans type MS

Single inlet centrifugal fan

Application

- **MS** blowers are used for exhaust gas suction sanding or for moving plastic materials
- The fan is suitable for handling air up to 80°C

Composition

- Aluminium cast casings
- Motor out of the air stream
- Dynamically and statically balanced impeller, forwarded blades galvanized or radial blades carbon steel impellers
- Asynchronous motor
- Protection IP55
- Insulation F
- 230Vac 1ph 50Hz or 400Vac 3ph 50Hz

Options

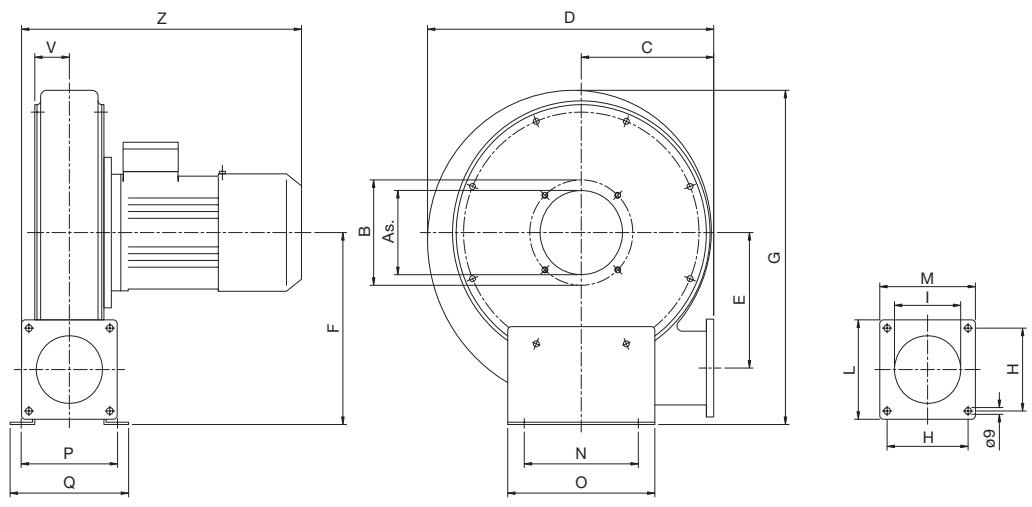
- Standard version suitable for continuous drive at 80°C
- High temperature 180°C version (SV)
- ATEX94/9/CE flameproof version

Order example

MS 22/400V

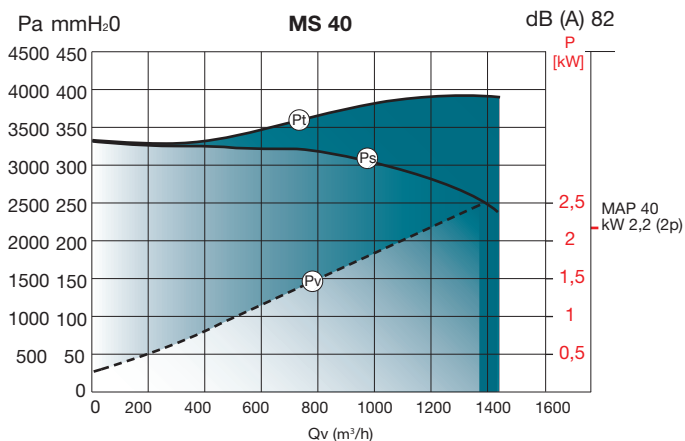
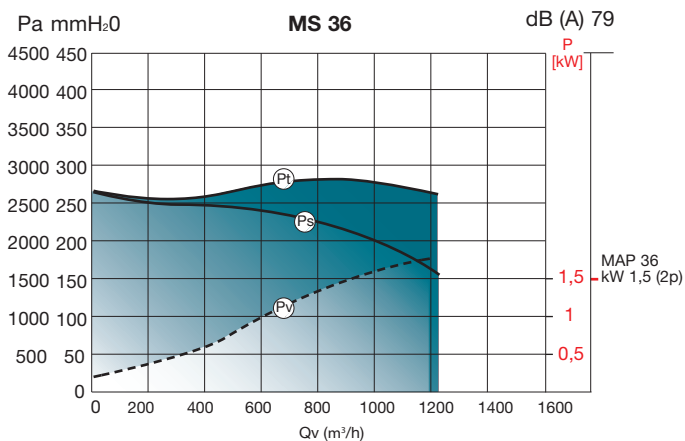
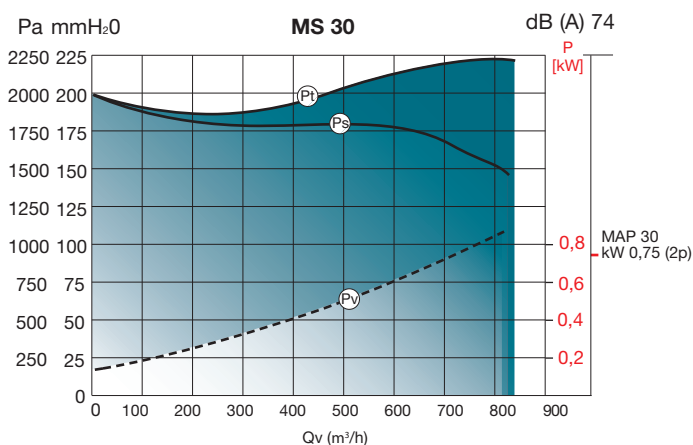
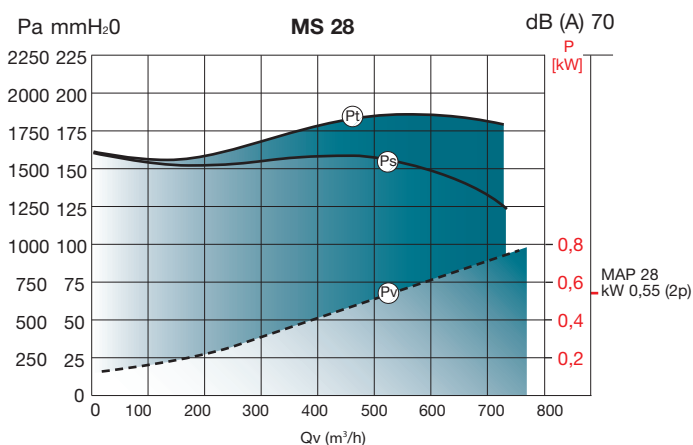
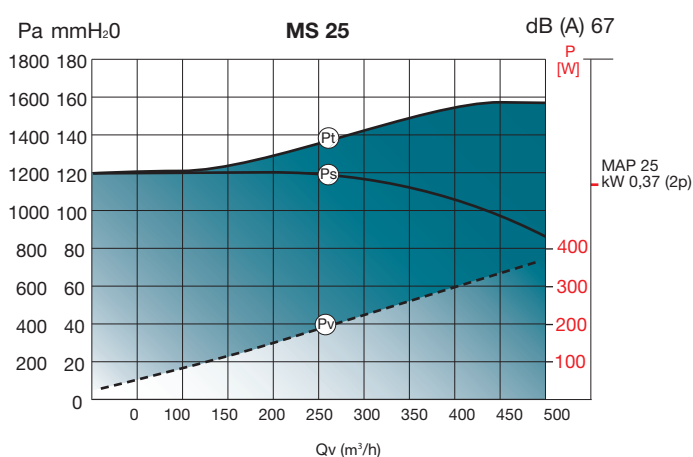
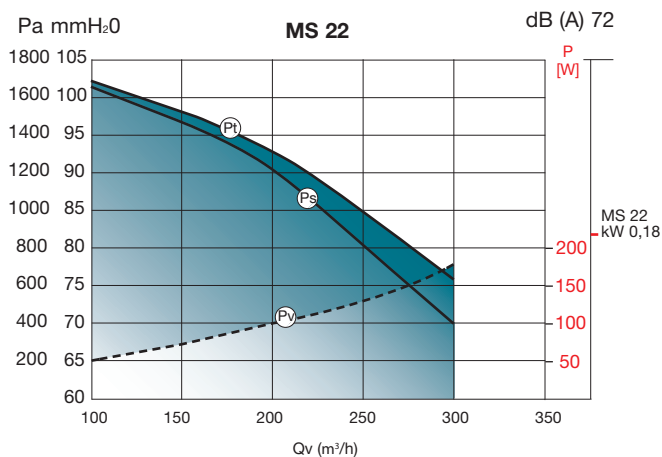
MS 22 = fan
400V = supply 3 Ph

	Мотор	Мощност [kW]
MS 22 / 220V	63 A2	0,18
MS 25 / 220V	71 A2	0,37
MS 28 / 220V	71 B2	0,55
MS 30 / 220V	80 A2	0,75
MS 35 / 220V	90 S2	1,5
MS 36 / 220V	90 S2	1,5
MS 40 / 220V	90 L2	2,2
MS 22 / 380V	63 A2	0,18
MS 25 / 380V	71 A2	0,37
MS 28 / 380V	71 B2	0,55
MS 30 / 380V	80 A2	0,75
MS 35 / 380V	90 S2	1,5
MS 36 / 380V	90 S2	1,5
MS 40 / 380V	90 L2	2,2

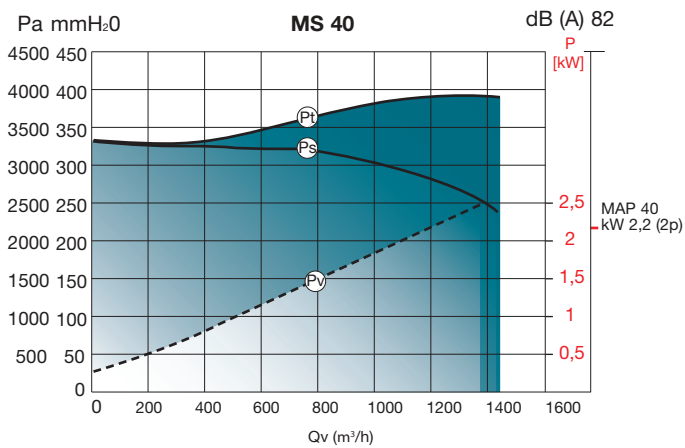
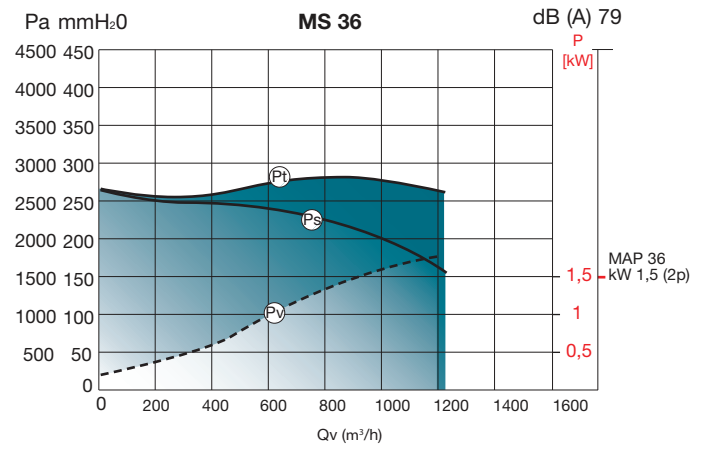
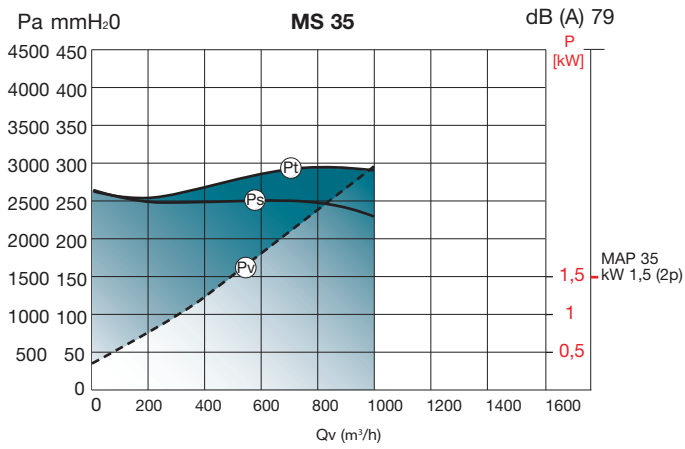


	Dimensions																Kg	
	As. [mm]	B [mm]	C [mm]	D [mm]	E [mm]	F [mm]	G [mm]	H [mm]	I [mm]	L [mm]	M [mm]	N [mm]	O [mm]	P [mm]	Q [mm]	V [mm]		Z [mm]
MS 22	90	105	135	288	130	188	328	68	66	108	108	140	170	120	151	44	282	9
MS 25	112	140	160	350	164	235	392	95	83	123	120	155	200	117	147	44	293	12
MS 28	112	140	182	395	182	255	447	110	9	132	130	155	200	131	161	48	303	17
MS 30	112	140	182	395	182	255	447	110	9	132	130	155	200	131	161	48	327	20
MS 35	112	195	226	475	217	292	517	115	105	145	145	180	220	146	186	53	435	25
MS 36	112	140	250	523	230	320	577	120	120	164	162	200	240	141	191	50	372	28
MS 40	112	140	250	523	230	320	577	120	120	164	162	200	240	141	191	50	372	31

Selection curves



Selection curves



Notes

- Pt = Total pressure
- Ps = Static pressure
- Pv = Absorbed power
- P[W]/P[kW] = Motor power
- Qv = Air flow rate
- T = 15°C
- P = 1 atm