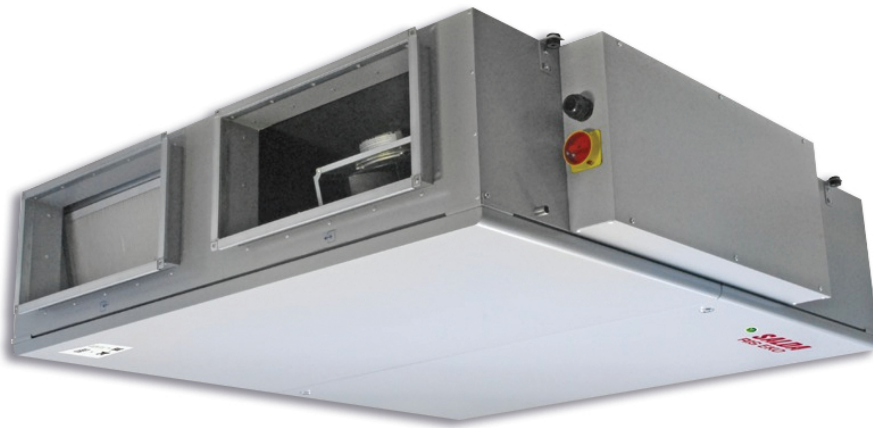


**AmberAir  
Compact RIS-P**

- Counterflow
- R-COVERY by SALDA
- $Q_v \leq 2.000 \text{ m}^3/\text{h}$
- Horizontal



## HRU with counterflow exchanger type AmberAir Compact RIS-P

- Flat heat recovery units with counterflow heat exchanger with or without integrated electrical post-heating. The unit is available in different versions until approx. 2.000 m<sup>3</sup>/h with horizontal outlets, in left or right execution. The unit is tested according to NBN EN308

**Brand**

- R-COVERY by SALDA

**Application**

- Ventilation for both residential and non-residential applications
- For indoor mounting in a frost protected area

**Composition**

- Housing in prelacquered steel plate RAL7040
- 50mm rock wool insulation, fire class A1
- Rectangular duct connections
- Panel filters M5 - ISO 16890 ePM10 55% / F7 - ISO 16890 ePM1 65% (exhaust/supply)
- Filter detection with pressure switch
- Condensation tray with drain
- Automatic bypass (100%)
- With or without built-in electrical post-heater (duct battery available as an option)
- Modbus communication included as standard
- Possibility of regulation by constant pressure or CO<sub>2</sub> (sensors not included)
- The remote control is not included
- MCB Light regulation

**Fan**

- Directly driven EC direct current fan with backward inclined blades
- Can be regulated 20-100%

**Exchanger**

- High efficiency counterflow heat exchanger in aluminium
- Heat exchanger certified according Eurovent EN 13141-7

**Filter**

- The AmberAir Compact RIS-P unit is equipped with two filters
- Panel filters M5 - ISO 16890 ePM10 55% / F7 - ISO 16890 ePM1 65% (exhaust/supply)

**Regulation & functions**

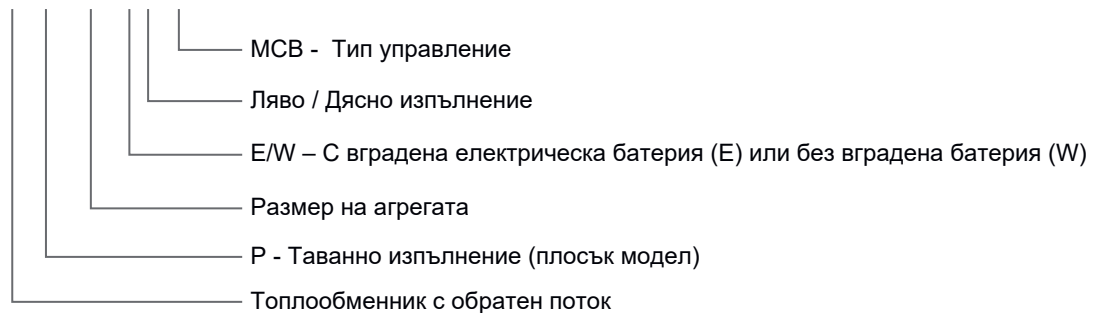
- MCB regulation
  - Type RIS-P...E: can additionally control an external duct battery (cooling)
  - Type RIS-P...W: can control two external batteries (cooling and heating)

**Versions**

- Type RIS-P xxxx WL: ceiling unit, without battery, left execution
- Type RIS-P xxxx WR: ceiling unit, without battery, right execution
- Type RIS-P xxxx EL: ceiling unit, with integrated electrical post heater, left execution
- Type RIS-P xxxx ER: ceiling unit, with integrated electrical post heater, right execution

**Versions**

**AMBERAIR COMPACT RIS-P 1200 EL MCB**



**Certification**

- The unit is tested according to NBN EN 308: [www.epbd.be](http://www.epbd.be)
- Getest volgens EUROVENT classificaties volgens EN13053
  - Mechanische sterkte: D1
  - Luchtdichtheidsklasse: L2/L1 (+700Pa/-400Pa)
  - Thermische overdrachtsklasse: T3
  - Koudebrugfactor: TB2
  - Filterlekkage: F9

**Accessories**

- Touchscreen controller, type **TS-AIR**
- Airtight control valve, type **RM-RBS**
- Connection piece, type **MS-RBS**
- CO<sub>2</sub> transmitter, type **DOX/E** or **WOX/E(-D)**
- Replacement filters, type **FS-RIS**

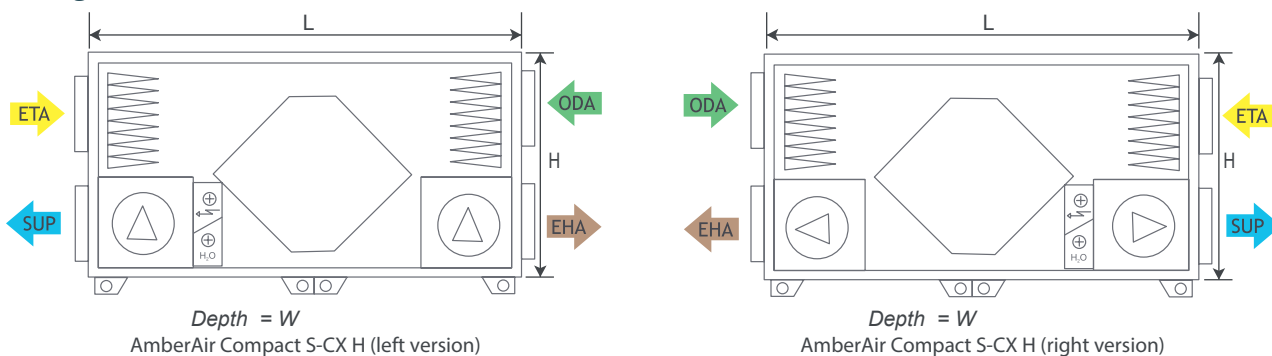
**Order example**

RIS-PE 1900 L

Explanation

- RIS-P = type of heat recovery unit
- E = with integrated electrical post-heating
- 1900 = size
- L = left execution

**Configuration horizontal**



	Dimensions					
	Dimensions casing*			Duct connections		Weight
	L [mm]	W [mm]	H [mm]	D [mm]	G [mm]	[kg]
RIS-P 1200	1550	1486	393	500	250	160
RIS-P 1900	1750	1956	400	700	300	250

\*Dimensional drawing: see "Downloads"